

1. Description of the EVOKLIP roof ladder

The EVOKLIP roof ladder is comprised of a set of modular elements designed for working on roofs when doing jobs lasting less than one hour: for longer operations, other types of equipment such as nacelles or scaffolding must be used.

A ridge hook must ALWAYS be used (supplied with references 725/733/739)

Reference	Description	Weight	Composition	Length:	Distance between rungs
02453 725	EVOKLIP PACK 250 MM BETWEEN RUNGS	23.5 kg	4 LADDERS 02453 401 1 HOOK KIT 02453 413	6.1m	250 mm
02453 733	EVOKLIP PACK 330 MM BETWEEN RUNGS	22.8 kg	4 LADDERS 02453 402 1 HOOK KIT 02453 413	6.7m	330 mm
02453 739	EVOKLIP PACK 390 MM BETWEEN RUNGS	20.6 kg	4 LADDERS 02453 403 1 HOOK KIT 02453 413	6.3m	390 mm

2. Introduction

Since working on roofs is a high-risk operation, **it is imperative to read these instructions** before use.

Under no circumstances may the roof ladder be used as a substitute for a fall prevention safety element. **A harness connected to a lifeline firmly attached to the roof MUST ALWAYS be worn.**

Planning interventions and rigorous preparation are essential for working safely, as is the use of equipment that complies with current standards.

Using a roof ladder requires extreme care. In addition to the type of equipment used, multiple factors can contribute to or cause a fall from a height (e.g., lack of personal protective equipment, awkward working postures, or unsuitable working methods).

Take account of the type of roof on which the ladder is going to rest as well as the type of work you are going to carry out.

3. Use

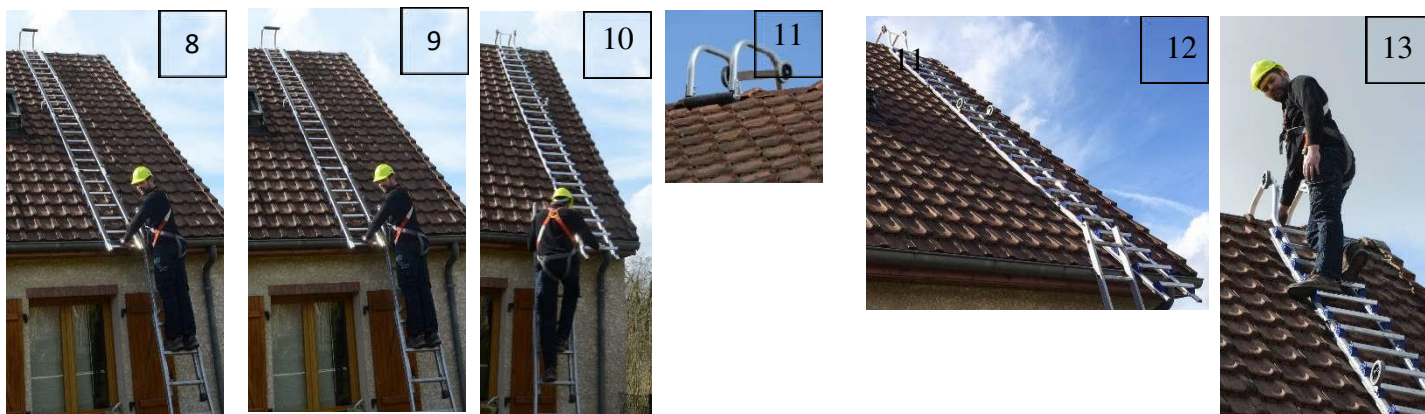
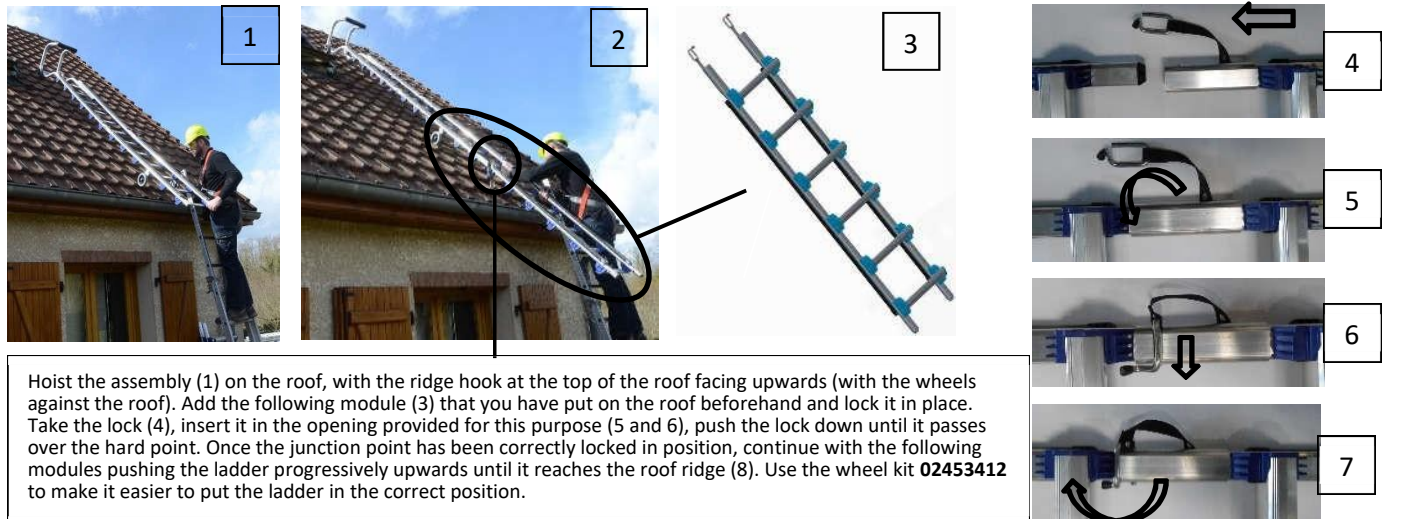
3.1 Before use:

- Make sure you are in sufficiently good form before using the roof ladder.
- Systematically check the ladder visually before using it to make sure that it has not been damaged and can be used in complete safety:
- Check that the roof surface is flat, firm, stable, and non-slip:
- Use a safety harness attached to a solid anchor point:
- Clean the area around the ladder:
- Postpone the intervention in case of any adverse changes in the weather (wind, rain, snow, ice, etc.):
- Do not work close to any electrical power sources:
- Check that the roof is sufficiently resistant.

3.2 Installation:



The ridge hook must ALWAYS be fitted. It must be assembled as per instruction leaflet 61029_414 to be found in the screw bag.



3.3 Safety instructions:

- Always read the instructions before use:
- Always assemble the ladder following these instructions:
- Never use without a ridge hook:
- Never use on a slippery surface:
- Make sure that assembly lies on the rubber support:
- Make sure that the ridge hook is correctly held on a sufficiently resistant surface:
- Climb up and down the ladder facing it:
- The maximum load allowed on the ladder is 150kg:
- The ladder must never rest on the gutter during use (The gutter must never be used as a point of support or a fixture):
- The roof ladder must never be used as a single-section leaning ladder:
- Do not use at angles of over 75°:
- The interlocks between modules must be checked before use.
- Remove the pins to unlock the modules:
- Only one person may use the ladder at a time:
- Never stand up on the ladder, it is imperative to always work and move with your legs against the ladder:
- Once the ladders have been disassembled, place them on top of each other, and fasten them together with the strap provided in the screw bag.

4. Maintenance, servicing, control

- Systematically check that the ladder is in good general condition before using it (the state of the parts and their geometry):
- Should a part need to be replaced, only use TUBESCA-COMABI components:
- (See after-sales service sheet available on the internet site).

5. Options:

- Tool-holder ref.: **02453411:**
- Wheel ref. **02453412:**
- Ridge hook ref: **02453413:**